

Jasper Memorial Hospital  
2025 – 2027 Community Health Needs Assessment and  
Implementation Plan



September 2025

## *Contents*

<i>About Jasper Memorial Hospital</i>	<i>3</i>
<i>The Mission of Jasper Memorial Hospital</i>	<i>3</i>
<i>A Letter from the Board Chair</i>	<i>3</i>
 <i>Acknowledgements &amp; Contributors</i>	 <i>4</i>
 <i>Introduction</i>	
<i>Approach and Process</i>	<i>5</i>
<i>Jasper Memorial Hospital's Community</i>	<i>6</i>
<i>Demographics of Jasper County</i>	<i>7</i>
<i>Understanding and Measuring Health</i>	<i>8</i>
 <i>Community Health Needs Assessment</i>	
<i>Health Profile of Jasper County – Social and Economic Factors</i>	<i>9</i>
<i>Health Profile of Jasper County – Health Behaviors</i>	<i>9</i>
<i>Health Profile of Jasper County – Clinical Care</i>	<i>10</i>
<i>Health Outcomes – Cardiovascular and Cerebrovascular Disease</i>	<i>11</i>
<i>Health Outcomes – Cancer</i>	<i>11</i>
<i>Health Outcomes – Mental and Behavioral Disorders</i>	<i>12</i>
<i>Review of 2022 – 2024 CHNA Priorities and Activities</i>	<i>13</i>
<i>Process of Identifying &amp; Prioritizing Community Health Needs</i>	<i>13</i>
<i>2025 - 2027 Community Health Needs</i>	<i>14</i>
 <i>JMH's Community Health Needs and Priorities for 2025 - 2027</i>	 <i>14</i>
<i>Health Need Priorities and Implementation Strategies</i>	<i>15</i>
 <i>Community Inventory - Health Facilities &amp; Resources</i>	 <i>18</i>
 <i>Data Sources</i>	 <i>19</i>

## About Jasper Memorial Hospital

Jasper Health Services, Inc. located in Monticello, GA operates Jasper Memorial Hospital (JMH), The Retreat Nursing Home, and The Primary Care Centers. Jasper Memorial Hospital is a 17-bed critical access hospital and is the sole hospital and emergency room provider in Jasper County. Jasper Memorial Hospital provides care for inpatient, outpatient, and emergency room patients. JMH is accredited by CMS and participates as a Medicare and Medicaid provider. The emergency room at JMH is staffed 24 hours a day, 7 days a week. Laboratory and radiology services are also available including, x-ray, ultrasound, CT scan, and 3-D mammography. Occupational, physical, and speech therapy services are available to JMH patients requiring those services. The Retreat is a 55-bed skilled nursing facility and is the sole facility of its type in the county.

Jasper Memorial Hospital owns and operates the Primary Care Center of Monticello and The Primary Care Center North. Each of the Primary Care Centers is a family practice, primary care clinic, providing medical services on an outpatient basis. The clinic provides evaluation and treatment to patients of all ages and varying levels of illness.

### Board of Directors

Alison Hildebrant  
Board Chair

Angela Gordon

Lyndsy Johnston

Walker Jordan

## The Mission of Jasper Memorial Hospital

The mission of Jasper Memorial Hospital is to provide high quality healthcare and health education to the citizens of Jasper County.

## A Letter from the Board Chair

Dear Friends,

Jasper Memorial Hospital is pleased to present this 2025 – 2027 Community Health Needs Assessment and Implementation Plan. With input from a broad range of committed citizens, we have identified and prioritized the community health needs of Jasper County. JMH is committed to working collaboratively with other local and regional organizations to implement strategies that advance the health and wellness of the residents of Jasper County.

The Board of Directors has adopted the 2025 Community Health Needs Implementation Plan and is committed to leveraging our existing programs, services, and resources to improve the health of the community that we serve.

Warm Regards,

Alison Hildebrant  
Chair, Jasper Health Services, Inc.

## Acknowledgement

*Jasper Memorial Hospital's Community Health Needs Assessment and Implementation Plan was developed by JMH staff with the assistance of LEGACY HEALTHCARE ADVISORS and generous input from a broad group of individuals representing the health interests of Jasper County residents.*

*The 36 individuals listed below provided professional knowledge, expert medical information, and community input regarding the most pressing health needs of Monticello and Jasper County. Jasper Memorial Hospital would like to acknowledge these individuals and thank them for their generous time.*

## Contributors

<b>Jonathan "Jake" Almand, PA-C</b> ER Provider and Hospitalist Rural Physician's Group	<b>Mike Benton</b> , County Manager Jasper County Community Member
<b>Jeff Bratcher, RN</b> Emergency Room Jasper Memorial Hospital	<b>Robin Carey, RN</b> Chief Compliance Officer Jasper Health Services
<b>Sandra Carter</b> Care Corps Community Member	<b>Robert Cumbie, PharmD</b> CEO Jasper Health Services
<b>Christopher Finch</b> Chief, Jasper County Fire Rescue/EMS Community Member	<b>Kenny Garland</b> Superintendent, Jasper County Charter System Community Member
<b>Crystal Gresham, RN</b> Emergency Room Manager Jasper Memorial Hospital	<b>Debbie Grier, RN</b> MDS Coordinator The Retreat Nursing Home
<b>Bruce Henry</b> , Chairman Jasper County Board of Commissioners Community Member	<b>Reverend Jimmy Horton</b> Springfield Baptist Church Community Member
<b>Melissa Horton, LPN</b> Community Member	<b>Laura Hudgins, LNHA</b> Administrator The Retreat Nursing Home
<b>Sonja Jackson</b> Dietary Manager Jasper Health Services	<b>Natalia Kubasova MD</b> Medical Director Primary Care Center Monticello
<b>Derrick Lane MD</b> Physician Primary Care Center Monticello	<b>David Leach, PharmD</b> Monticello Drugs Community Member
<b>Monica Loftin</b> Health Information Manager Jasper Health Services	<b>Samantha Mashburn, RN</b> Assistant Director of Nursing Jasper Memorial Hospital
<b>Jacqueline McCall</b> Registered Dietician Jasper Health Services	<b>Kim McMichael</b> Food Bank Community Member
<b>Sabrina Miles, RN</b> Assistant Director of Nursing The Retreat Nursing Home	<b>Kathy Mudd</b> Publisher, The Monticello News Community Member
<b>Lauren Nation</b> Jasper County Health Department Community Member	<b>Ashley Nordstrom, PA-C</b> Physician's Assistant Primary Care Center Monticello
<b>Andrew Odegaard MD</b> Physician Primary Care Center North	<b>Donnie Pope</b> , Sheriff Jasper County Community Member

<b>Sheila Pounds</b> Jasper County Board of Commissioners Community Member	<b>Kelly Raney</b> Director of Nursing Jasper Memorial Hospital
<b>Sonya Rivers, MT</b> Sr. Director of Human Resources and Ancillary Departments Jasper Health Services	<b>Tony Rogers</b> , Executive Director Jasper County Economic Development Authority Community Member
<b>Tina Smith</b> , Director Patient Access Manager Emergency Preparedness Jasper Health Services	<b>Amy Sofala</b> PFS Manager Jasper Memorial Hospital
<b>Elizabeth Wood PA-C</b> Physician's Assistant Primary Care Center Monticello	<b>Marlena Waddell</b> Rehab Manager Jasper Health Services

## Approach and Process

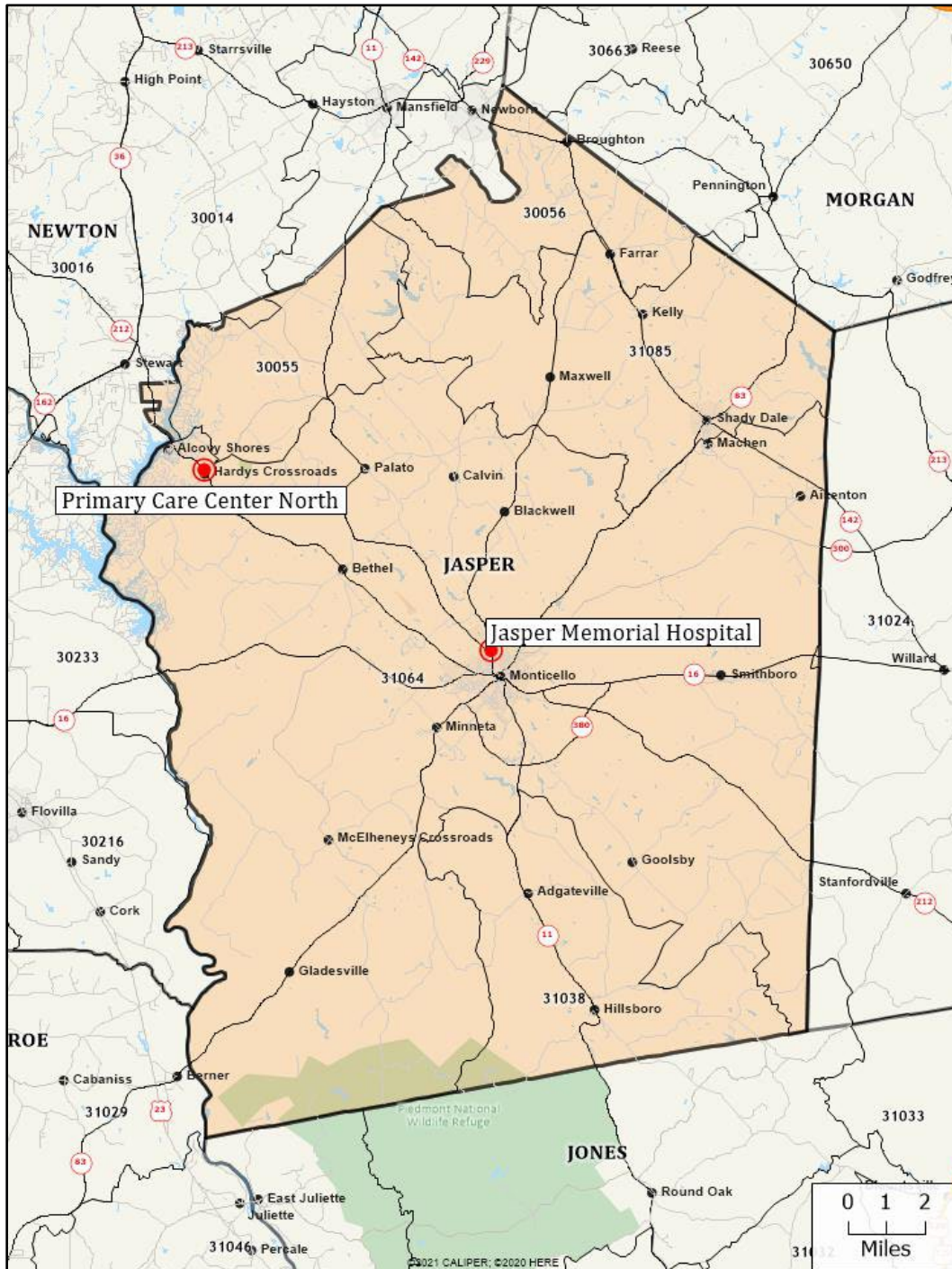
*Jasper Memorial Hospital's approach to achieving community health improvement priorities follows a six-step process designed to be updated every three years to assess progress in addressing the health needs of the community. It begins with defining JMH's target community, and then assessing the health needs of the community using available health data and input from a broad range of advocates representing the health interests of the residents within the community. Input is gathered via face-to-face interviews. From analysis of data and community input, the health needs are identified and prioritized. The six-step planning process follows:*

- 1. Assess the health needs of Jasper County*
- 2. Set health improvement priorities*
- 3. Plan health improvement initiatives to address priorities*
- 4. Implement specific health improvement strategies and plans*
- 5. Report health improvement plans and benefits to the Jasper County public*
- 6. Evaluate outcomes and progress toward health improvement goals.*

*The leadership at Jasper Memorial Hospital meets to develop strategies and plans to address the identified health need priorities. These strategies and plans are then implemented and reported to the public via the hospital's website as Jasper Memorial Hospital's Community Health Needs Assessment and Implementation Plan.*

## Jasper Memorial Hospital's Community

As the sole provider of inpatient and emergency room care in the county, Jasper Memorial Hospital defines its service area as Jasper County consisting of 373 square miles. The county seat of Monticello is located approximately 60 miles southeast of Atlanta and 35 miles north of Macon.

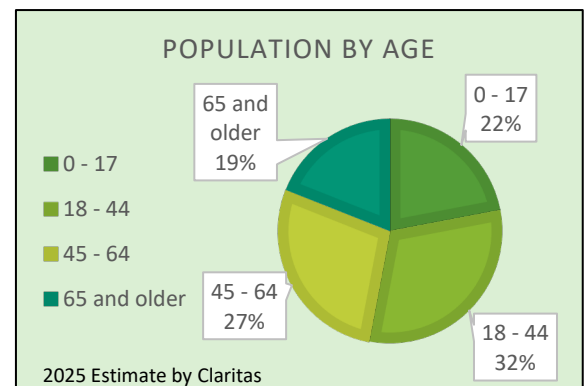
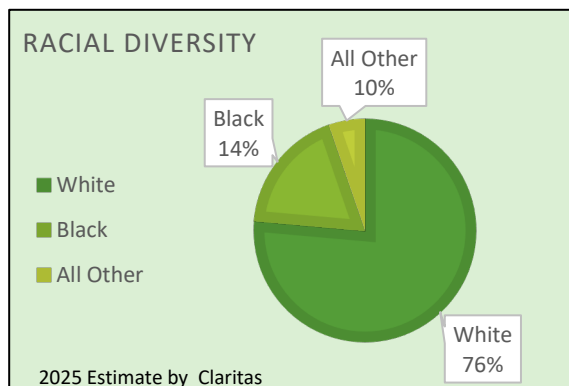


## Demographics of Jasper County

Jasper County's 2025 population estimate by Claritas is 17,310. The 2027 population is estimated to be 18,109 with a three-year growth of 4.6 per cent.

Jasper County 2025 Population	17,310
Median Household Income	\$67,700
Children in Poverty	21.0%
Individuals Without Healthcare Coverage	14.0%
Unemployment	2.9%
Source: Claritas 2025 Population, 2023 American Community Survey, Population Health Institute County Health Rankings 2025 Report	

The total population is 76 per cent white, 14 per cent black, and 10 per cent other races. The largest population cohort is young adults (18 – 44) with nearly a third of the population. The senior population is projected to have the highest growth rate of 28.4 per cent over the next five years to 2030.

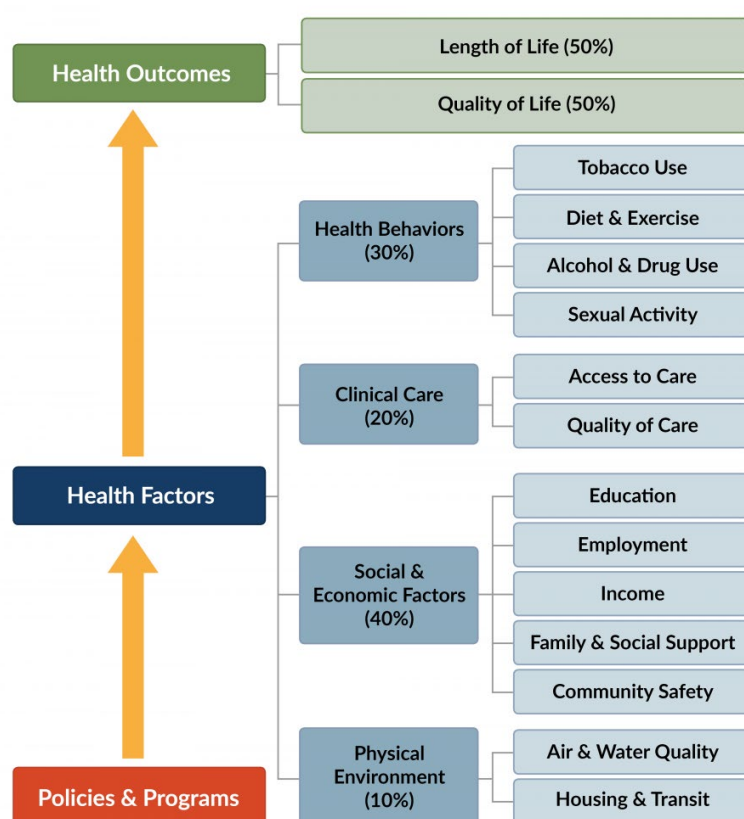


Based on research by the University of Wisconsin's Population Health Institute and its County Health Rankings Report for 2025, there are significant differences in health outcomes, from one county to the next and among racial/ethnic groups. Health disparities emerge when some individuals gain more than others—from consistently better access to opportunities and resources over the course of their lives. Increasing opportunities for everyone can reduce gaps in health.

Further, aging adults as expected experience higher risk of chronic disease. Many older adults manage two or more chronic conditions. Common chronic conditions include heart disease, cancer, stroke, bronchitis, diabetes, and Alzheimer's.

## Understanding and Measuring Health

Many factors affect how well and how long we live. Conditions in the places where people live, learn, work, and play affect a wide range of health risks and outcomes. These conditions are known as social determinants of health (SDOH). Grouping common health factors helps to demonstrate the degree of impact on health outcomes. According to County Health Rankings, the four primary areas that impact health are: socioeconomic factors, health behaviors, clinical care, and physical environment. Each of these areas has a different impact on health as shown in the following chart. For instance, only 20% of a person's health is related to clinical care. The remaining 80% is related to socioeconomic factors (40%), health behaviors (30%), and physical environment (10%).



Health starts in our homes, schools, workplaces, neighborhoods, and communities. We know that taking care of ourselves by eating well and staying active, not smoking, getting the recommended immunizations and screening tests, and seeing a doctor when we are sick all influence our health. Our health is also determined in part by access to social and economic opportunities; the resources and supports available in our homes, neighborhoods, and communities; the quality of our schooling; the safety of our workplaces; the cleanliness of our water, food, and air; and the nature of our social interactions and relationships. The conditions in which we live explain in part why some Americans are healthier than others and why Americans more generally are not as healthy as they could be.

Source: County Health Rankings, University of Wisconsin Population Health Institute

In order to improve health, it is important to understand and measure the social determinants of health as well as clinical care. Within each of the four categories (Socioeconomics, Health Behaviors, Clinical Care, and Environment) are additional individual factors that impact health. The County Health Ranking model can be used as a guideline to develop a health profile of a community. The following pages provide a closer look at the social determinants of health for Jasper County with additional emphasis on concerns regarding clinical care and outcomes from the Georgia Department of Public Health.

## Health Profile of Jasper County – Social and Economic Factors

40% of an individual's health is related to their social and economic factors. Social and economic factors impact health outcomes more than any other single category. Social and economic factors include education, employment, income, family and social support, and community safety.

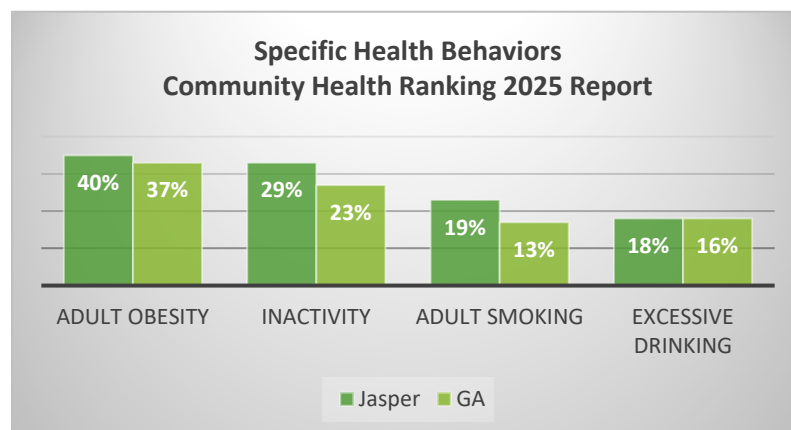
Indicator	Jasper	GA
Median Household Income	\$67,700	\$74,500
Children in Poverty	21.0%	19.0%
Unemployment	2.9%	3.2%
Uninsured	14.0%	14.0%
High School Graduation Rate	89%	89%

Source: County Health Rankings, University of Wisconsin Population Health Institute

The median household income in Jasper County is \$67,700. This is lower than the same statistic for the state of Georgia of \$74,500. The percent of children living in poverty is 21 per cent for Jasper County as compared to 19 per cent for the state. Jasper County did have a lower unemployment rate than the state (2.9 per cent versus 3.2 per cent). The uninsured rate was 14.0 per cent for both Jasper County and the state. The high school graduation rate for Jasper County students and the state's average was 89 per cent.

## Health Profile of Jasper County – Health Behaviors

30% of an individual's health is related to health behaviors. Health behaviors are actions individuals take that affect their health. The effect can be positive or negative. Health behaviors influence health outcomes to a greater degree than clinical care so it is important to understand and implement health improvement programs that can have a significant impact on a population's health behaviors. Improving healthy habits such as eating well and being physically active contribute to improved health. Eliminating or reducing unhealthy habits such as smoking, excessive alcohol intake, and risky sexual behavior can also contribute to improved health. Input from our community stakeholders indicate that the health behaviors that they are most concerned about are substance abuse, obesity, poor nutritional choices, and lack of physical activity.



In the United States, many of the leading causes of death and disease are attributed to unhealthy behaviors. For example, poor nutrition and low levels of physical activity are associated with higher risk of cardiovascular disease, type 2 diabetes, and obesity. Tobacco use is associated with heart disease, cancer, and poor pregnancy outcomes. Excessive alcohol use is associated with injuries, certain types of cancers, and cirrhosis. (Source: County Health Rankings)

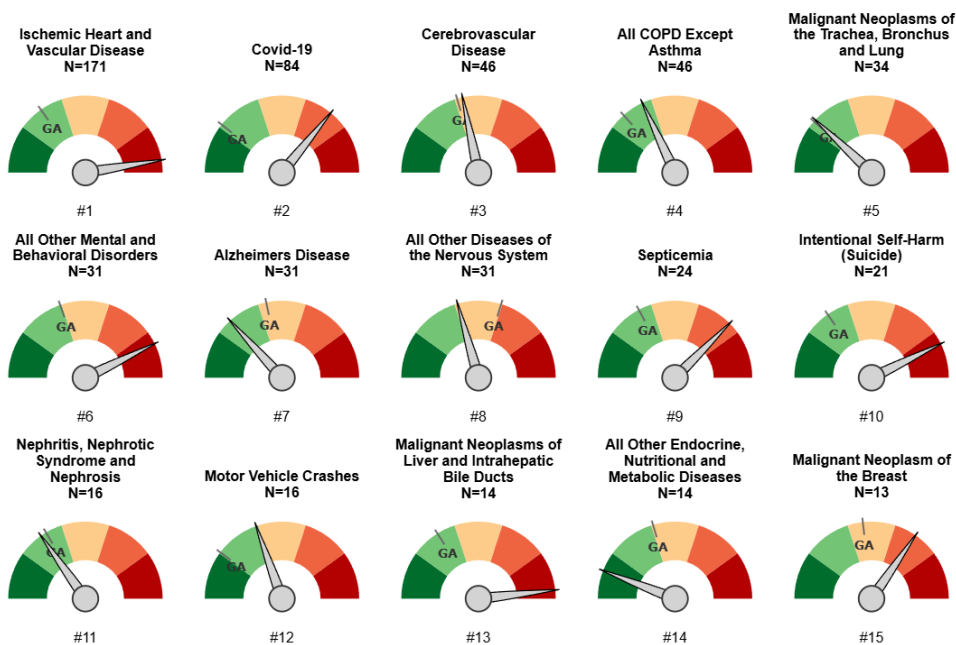
Source: County Health Rankings, University of Wisconsin Population Health Institute

## Health Profile of Jasper County – Clinical Care

Twenty per cent of an individual's health is related to clinical care. Access to affordable, quality, and timely health care with appropriate and periodic health screenings can help prevent diseases and detect issues sooner, enabling individuals to live longer, healthier lives. Those without regular access to quality providers and care are often diagnosed at later, less treatable stages of a disease and overall, have worse health outcomes, lower quality of life, and higher mortality rates. Jasper County is designated by the Department of Health and Human Services as a Medically Underserved Area (MUA). It is also a designated Health Professional Shortage Area (HPSA) for primary care, mental health, and dental care. A HPSA is a geographic area, population group, or health care facility that has been designated by the Federal government as having a shortage of health professionals. This shortage of health professionals can affect an individual's access to healthcare services. Despite these designated shortages, Jasper County residents have several local options for primary care services including: The Primary Care Center of Monticello, the recently opened Primary Care Center North, The Jasper County Health Department, and Village Medical. Inpatient care, emergency care, and skilled nursing care are all available locally at JMH.

The following chart on health outcomes for the latest period (2020 – 2024) summarizes and ranks the top 15 clinical conditions, the sum of deaths for each cause in Jasper County, and their relative position in the state of Georgia.

**Ranked Causes and State/County Comparison, Age-Adjusted Death Rate, Jasper County, 2020-2024**



Using Georgia Rankable Causes. Numbers shown are the sum of deaths. Click on a Dial for more information.

*There were 592 deaths during the period of 2020 – 2024 and 70 per cent of this total (414 deaths) was caused by the following major conditions:*

<i>Ischemic heart, vascular and cerebrovascular disease</i>	<i>37%</i>	<i>(217 deaths)</i>
<i>Covid-19</i>	<i>14%</i>	<i>(84 deaths)</i>
<i>Cancer</i>	<i>10%</i>	<i>(61 deaths)</i>
<i>Mental, behavioral, and self-harm</i>	<i>9%</i>	<i>(52 deaths)</i>

*What follows is a brief discussion of each of these conditions with the exception of COVID-19, which was an unusual and major world-wide health event during the 2020 – 2022 period.*

## **Health Outcomes – Cardiovascular and Cerebrovascular Disease**

*Heart disease, stroke, high blood pressure, and other circulatory conditions are all types of cardiovascular and cerebrovascular disease. For the time period of 2020 - 2024, 37 per cent of deaths in Jasper County were caused by these conditions. The age adjusted death rate for cardiovascular disease in Jasper County was nearly three times as high as the death rate experienced by the state. (Source: OASIS)*

*A closer look at cardiovascular disease statistics for Jasper County reveals that the majority of deaths in this category are from ischemic heart and vascular disease. Ischemic heart and vascular disease are the number one ranked cause of death in Jasper County. It is also the number one ranked cause of premature death. Premature death is defined as deaths occurring prior to age 75. All total there were 171 deaths of Jasper County residents from ischemic heart and vascular disease. (Source: OASIS)*

*According to the Centers for Disease Control and Prevention (CDC), high blood pressure, high LDL cholesterol, and smoking are key disease risk factors with 40% of Americans having at least one of these three risk factors. Several other medical conditions and lifestyle choices can also put people at a higher risk for heart disease, including diabetes, obesity, poor diet, physical inactivity, and excessive alcohol use.*

*In order to reduce the risk of cardiovascular disease the American Heart Association encourages all Americans to focus on prevention and lead a heart-healthy life involving diet, regular exercise, and periodic medical check-ups. Starting with even small changes can help reduce the risk of heart disease.*

## **Health Outcomes – Cancer**

*Malignant neoplasms, commonly referred to as cancer, caused 10 per cent of the deaths in Jasper County for the period 2020 - 2024. Cancer deaths during this period totaled 61, which is about 50 per cent less than that reported in the 2022 – 2024 health needs assessment. However, the death rate in Jasper County is higher than the state's death rate for liver, bile, and breast cancer.*

*Lung, trachea, and bronchus cancers combined are the fifth leading cause of death in Jasper County with an age-adjusted death rate of 31.2, comparable to the Georgia age-adjusted death rate of 31.0. There were 34 deaths of Jasper County residents from lung, trachea, and bronchus cancers. According to the*

*CDC, cigarette smoking is the number one risk factor for these cancers. In the United States, cigarette smoking is linked to about 80% to 90% of lung cancer deaths.*

*Liver and bile duct cancers represent the thirteenth leading cause of death in Jasper County. The age-adjusted death rate for Jasper County is 13.6 which is higher than the state's rate of 6.6. For the period 2020 - 2024, there were 14 deaths of Jasper County residents from liver and bile duct cancers. Symptoms from liver cancer are uncommon in early stages while later stages may include weight loss, belly pain, and yellowed skin. Treatments may include removal of part of the liver, transplant, chemotherapy, and radiation. Bile duct cancer is rare but an aggressive form of cancer with symptoms including jaundice. Treatment may include surgery, chemotherapy, and radiation.*

*Breast cancer is the fifteenth leading cause of death in Jasper County. The age-adjusted death rate for Jasper County is 13.8, higher than the state's rate of 11.7. For the period 2020- 2024, there were 13 deaths of Jasper County residents from breast cancer. According to the CDC, a mammogram is the best way to find breast cancer early when it is easier to treat and before it is big enough to feel or cause symptoms. Having regular mammograms can lower the risk of dying from breast cancer.*

## **Health Outcomes – Mental and Behavioral Disorders**

*Mental and behavioral health is a very broad diagnostic category. According to the CDC, mental health and mental illness are not the same thing. A person can experience poor mental health and not be diagnosed with a mental illness. Mental illnesses are conditions that affect a person's thinking, feeling, mood or behavior. Mental illness can be diagnosed in the pediatric, adult, and geriatric populations.*

*Mental and behavioral disorders is the sixth leading cause of death in Jasper County. The age-adjusted death rate for mental and behavioral disorders in Jasper County of 35.4, is higher than the rate for the state of 20.0. Total deaths for the period 2020 - 2024 were 31. Intentional self-harm (suicide) is the tenth leading cause of death in Jasper County with an age-adjusted death rate of 25.3 versus the state's rate of 14.4. Total deaths for the period were 21.*

*Our stakeholder interviews consistently ranked these issues of high concern for all age, race, and socioeconomic groups. Specific areas of concerns include substance abuse, behavior disorders in the pediatric and adolescent population, and dementia in the geriatric population. Access to local, affordable, comprehensive mental health treatment is also a stated area of concern.*

*There is broad consensus from advocates representing the community that Jasper County lacks the resources to adequately address the needs of individuals with mental and behavioral health conditions. Barriers to care include the lack of locally based treatment and providers, the lack of insurance coverage or financial means to pay for care, transportation difficulties, and the stigma surrounding mental health conditions.*

## **Review of JMH's 2022 – 2024 CHNA Priorities and Activity**

*The prior three-year period covering 2022 – 2024 consisted of three primary health priorities:*

- 1) Cancer Screening Expansion (with emphasis on colon cancer)*
- 2) Interventional Pain Services (to address chronic physical pain)*
- 3) Obesity and Nutrition (with emphasis on diabetes prevention).*

*The first two priorities were driven by an ambitious physician recruitment plan to bring to Monticello a gastroenterologist and an interventional pain physician to provide colonoscopies and interventional pain procedures respectively. Essential to this plan was JMH's renovation and expansion including the build-out and equipping of an outpatient procedure suite.*

*The two physicians demonstrated great interest in coming to Monticello, but decided not to follow through. However, JMH proceeded in completing the renovation and the build-out of a fully equipped outpatient suite which now provides much needed space and more opportunities as the 2025 – 2027 plan is finalized.*

*Regarding cancer screening, JMH continued with its existing programs for breast cancer screening using its 3-D mammography acquired in 2019 as well as screening for lung cancer using low dose CT scans. In addition, JMH's prevention education related to cancer was provided through its Primary Care Centers in Monticello and at its new location at Primary Care Center North. Its outreach efforts focused on the community's awareness and education regarding the increased risks of cancer and the link between weight, nutrition, and exercise and the risk of cancer.*

*Regarding JMH's third priority – Obesity, Nutrition, and Prevention of Diabetes - JMH worked to improve the community's awareness of the health implications of obesity, poor diet, and the impact of a sedentary lifestyle with a special emphasis on these factors that together lead to diabetes. The hospital and the Public Health Department provided routine screenings such as blood pressure, cholesterol, and blood glucose levels. The Primary Care Center Monticello and Primary Care Center North provided continuing care for its patients, many of which are diabetic.*

## **Process of Identifying and Prioritizing Community Health Needs**

*The community health needs of residents within Jasper County were identified through in-depth interviews with a broad range of 36 stakeholders representing the interests of the community including public health representatives, community leaders, physicians, education, public safety, and other health care providers and interested parties. Based on the collected interviews, expertise, and feedback from this group of advocates representing the interests of Jasper County and analysis of available health data, a list of community health needs was developed. There was significant consensus around six specific community health needs, based on the unprompted frequency that these needs were identified by participants.*

## ***Jasper Memorial Hospital 2025 – 2027 Community Health Needs***

*The pervasive need to improve community education and awareness, as well as provide access to services that address the following health needs:*

- *The need to address the community problem of obesity, poor nutrition, lack of exercise, with special emphasis on diabetes education and prevention*
- *The closely linked issue of cardiovascular health*
- *The opportunity to expand JMH's cancer screening capabilities*
- *The continuing problem of mental health, behavioral issues, and substance abuse*
- *The community's need for dialysis care*
- *The need to provide transportation solutions for out-of-hospital and Emergency transfers*

### ***Community Health Needs and Priorities for 2025 - 2027***

*Each of the six identified health needs were evaluated and prioritized by input from the JMH CHNA Steering Committee composed of hospital leadership. Health needs were prioritized based upon the scope and severity of the issue. Each need was evaluated based upon the priority of the issue, the fit with the JMH mission, the ability to achieve improvement, and the availability of hospital resources. Three of the six identified health needs were selected for implementation by consolidating the issue of obesity, nutrition, lack of exercise, diabetes with cardiovascular disease since these are closely linked health issues.*

- 1) Obesity, Nutrition, Exercise, Diabetes, and Cardiovascular Health*
- 2) Cancer Screening Expansion*

*The remaining three identified health needs will be addressed through other means.*

*While mental health, behavioral issues, and substance abuse continue to be significant health issues in Jasper County, community resources are limited beyond the JMH Emergency Department working with Behavioral Health Connections and physicians in the Primary Care Centers providing care within their scope of practice. Out of county agencies will continue to be used as referral sources; also, the nation-wide 988 hotline will be promoted.*

*Dialysis care will be referred to dialysis centers in Covington, Madison or Macon.*

*The remaining need for transportation solutions to address in and out-of-hospital transfers is an on-going issue currently being discussed between JMH leadership and the Jasper County Fire Rescue/EMS Chief with involvement of Jasper County government officials. Efforts are underway to reach a compromise regarding the types of patient conditions that can be managed by the JMH emergency department, and how transfers out of the hospital can be addressed.*

\* \* \* \* \*

*An individual's access to clinical care and treatment options is impacted by economic constraints. JMH will continue to participate as a Medicaid and Medicare provider and will continue to educate its patient population about coverage and payment options in accordance with established policies. Due to resource constraints, JMH is strategic about what community health needs can be addressed by the hospital. The established priorities reflect this approach.*

*By using an integrated implementation approach, many health needs can be addressed with an outcome-based approach. The health need regarding obesity, nutrition, and exercise, for example, are health behaviors that are closely related to the outcomes of heart disease, cancer, and diabetes. In order to focus its efforts and have the greatest impact, JMH will address these health behaviors as they specifically relate to their health outcomes.*

*JMH is committed to continued community involvement and working collaboratively with other community organizations to create a healthy Jasper County. The implementation plan for the two top priorities will emphasize working collaboratively with the County Health Department, the Food Bank, the Jasper County Charter Schools, Family Connections, and the Jasper County Senior Center. JMH conducts outreach by regularly participating in community wide events including school events. Community stakeholders, representing a wide array of interests, report a high level of community involvement and a cooperative spirit on the part of JMH leadership and staff.*

*JMH will continue its practice of seeking out formal and informal strategic alliances with other health care organizations when such arrangements benefit the citizens of Jasper County. In those instances where a need exists and there is no viable strategic alliance, JMH is committed to evaluating the feasibility of establishing or expanding specific services that are in keeping with its mission and available resources.*

## **2025 - 2027 Health Need Priorities and Implementation Strategies**

*The following discusses each of the two health need priorities and outlines specific implementation strategies.*

### **Priority #1 – Obesity, Nutrition, Exercise: Diabetes and Cardiovascular Health**

***There is a need for improved community awareness and education regarding the prevention of diabetes and cardiovascular disease through improved nutrition, exercise, and weight control.***

*The benefit of emphasizing an integrated and coordinated implementation approach is especially important when addressing diabetes prevention and cardiovascular health along with the importance of several health behaviors – good nutrition, regular exercise, and weight control – in mounting a successful approach to dealing with these chronic diseases.*

*What distinguishes diabetes and cardiovascular health is the fact that both diseases are caused by many of the same factors, and it is common for co-morbidities to exist for both diseases. It is also a fact that the individual can control many of these factors that contribute to these diseases, so taking personal responsibility is essential to all efforts undertaken by Jasper Memorial Hospital. JMH's approach to dealing with these health issues will emphasize working collaboratively with other community organizations to provide education and promote healthy lifestyle choices.*

*It is important to re-emphasize our findings regarding the age-adjusted death rates for Jasper County and that the number one cause is ischemic heart and vascular disease. There were 171 deaths due to cardiovascular disease during 2020- 2024, and many of these were premature, making lifestyle choices an important change that can significantly impact this outcome. Nearly half of US adults have some type of heart disease and it is the leading cause of death for US adults accounting for one of every three deaths.*

*The CDC indicates that 38.1 million or 14.7 per cent of US adults have diabetes and 8.7 million adults are not aware of their condition. Almost 100 million have pre-diabetes. Moreover, more than 350,000 children and adolescents have diagnosed diabetes. Diabetes is the seventh leading cause of death in the United States.*

*The CDC's Division of Nutrition, Physical Activity, and Obesity (DNPAO) reports that physical inactivity and poor nutrition are major risk factors for obesity and chronic diseases such as diabetes, heart disease, stroke, certain cancers, and depression. Fewer than 1 in 10 US adolescents and adults eat sufficient fruits and vegetables, and more than 3 in 4 adults do not fully meet physical activity guidelines.*

*As noted earlier, County Health Rankings of the University of Wisconsin Population Institute indicates that 40 per cent of Jasper County residents are obese and 29 per cent do not meet recommended levels of physical activity.*

### **Implementation Strategy**

*Jasper Memorial Hospital will focus its outreach efforts on prevention by improving the community's level of awareness and education regarding the increased risk of diabetes and cardiovascular disease because of poor nutrition, insufficient weight control, and lack of exercise.*

*Jasper Memorial Hospital will participate in county-wide periodic health fairs focusing on screenings and educational classes to address dietary "heart healthy" meal planning, medication compliance, and guidelines for managing diabetes.*

*Jasper Memorial Hospital will offer to large employers (schools, county government, industries) health fairs designed to address specific needs of these employers regarding cardiovascular health and managing diabetes.*

*Jasper Memorial Hospital will collaborate with the schools' dietician in developing and distributing "healthy habit" educational "flyers" to middle school students.*

*Jasper Memorial Hospital will initiate a Cardio-Pulmonary Rehabilitation program and a Wound Care program to support heart and diabetic patients using the Outpatient Suite.*

## **Priority #2 – Cancer Screening Expansion**

***There is a need to expand cancer screening and improve community awareness and education regarding the prevention, screening, and early detection of cancer.***

JMH made significant progress in the last few years in addressing the need for improving the community's access to cancer screening by acquiring 3-D mammography and implementing breast cancer screening. The introduction of this new service supplemented the existing cancer screening for lung cancer through low

dose CT scans. Opportunities exist for expanding cancer screenings for other cancers, particularly colorectal, prostate, breast, and lung where each of these cancers have a designated cancer awareness month assigned to increase screening rates. Depending on a person's age, history, and risk factors, screening is very important to increase survival rates for those diagnosed with cancer and can be used to detect some cancers before a person may have symptoms according to the American Cancer Society.

In expanding cancer screening in designated months of the year, JMH will promote the cancer screenings in coordination with Primary Care Center physicians who are responsible for ensuring clinical criteria is met and must order the screening. This is consistent with JMH's prevention education related to cancer as provided during outpatient primary care and emergency room visits. The American Cancer Society recommends that all individuals talk to their doctor about screening for cancer.

According to the American Cancer Society, individuals can reduce the risk of cancer by making healthy choices by eating right, staying active, and not smoking. JMH maintains a tobacco free campus. Employees that smoke are encouraged to quit. Employees that do not smoke receive a preferential premium rate for employer sponsored health insurance. Employees are encouraged to participate in the wellness program that is offered by the health plan provider.

### **Implementation Strategy**

Jasper Memorial Hospital will coordinate its community outreach efforts on improving the community's level of awareness and education regarding the link between weight, nutrition, and exercise and the risk of cancer with its community outreach efforts regarding cardiovascular health and diabetes prevention.

Jasper Memorial Hospital will expand its cancer screening services by promoting the following Cancer Awareness Month where the JMH performs the screenings at the Medicare rate if the patient is covered or at cost for these months:

- March: Colorectal Cancer Awareness Month
- September: Prostate Cancer Awareness Month
- October: Breast Cancer Awareness Month
- November: Lung Cancer Awareness Month

Jasper Memorial Hospital will increase screening rates of females that meet the clinical criteria for breast cancer screening by coordinating special events with employers with significant female employees such as schools and the hospital.

## Community Inventory – Health Facilities and Resources

Abbey Hospice 215 Azalea Court Social Circle, GA 30025 Phone: (770) 464-5858 <a href="http://www.abbeyhospice.com">www.abbeyhospice.com</a>	MESEPP Community – Counseling and Support 1226 Royal Drive, Suite K Conyers, GA 30094 Phone: (678) 907-5950 <a href="http://www.mesepp.org">www.mesepp.org</a>
American Cancer Society <a href="http://www.cancer.org">www.cancer.org</a>	Oconee Center – Behavioral Health Services 731 Funderburg Dr. Monticello, GA 31064 Phone: (478) 445-3201 <a href="http://www.oconeecenter.org">www.oconeecenter.org</a>
American Heart Association <a href="http://www.heart.org">www.heart.org</a>	The Primary Care Center of Monticello 898 College St # A, Monticello, GA 31064 Phone: (706) 468-0988 <a href="http://www.jaspermemorialhospital.org">www.jaspermemorialhospital.org</a>
Amedisys Home Health of Covington 4162 Baker Street NE Covington, GA 30014 Phone: (770)787-1796 <a href="http://www.amedisys.org">www.amedisys.org</a>	The Primary Care Center North 4100 Jackson Lake Road Monticello, GA 31064 Phone: (706) 468-4588
Department of Family and Children’s Services 226 Funderburg Drive Monticello, Georgia 31064-1154 Phone: 1-800-436-7442 <a href="http://www.dfcs.dhs.georgia.gov/jasper-county-dfcs-office">www.dfcs.dhs.georgia.gov/jasper-county-dfcs-office</a>	The Retreat Nursing Home 898 College St, Monticello, GA 31064 Phone: (706) 468-8826 <a href="http://www.jaspermemorialhospital.org/retreat.shtml">www.jaspermemorialhospital.org/retreat.shtml</a>
Family Connections 1405 College Street Monticello, GA 31064 Phone: (706) 468-4959 <a href="http://www.jasper.gafcp.org">www.jasper.gafcp.org</a>	US Renal Care 4179 Baker Street NE Covington, GA 30014 Phone: (770)385-4015 <a href="http://www.usrenalcare.com">www.usrenalcare.com</a>
Jasper County Community Food Bank 2171 Post Rd Monticello, GA 31064 Phone: (706) 478-6076 <a href="http://www.foodpantries.org">www.foodpantries.org</a>	Village Medical Associates 545 Venture Court Monticello GA 31064 Phone: (706) 468-7002 <a href="http://venturemedicalassociates.com">http://venturemedicalassociates.com</a>
Jasper County Health Department 825 Eatonton St. Monticello, GA 31064 Phone: (706) 468-6850 <a href="http://www.northcentralhealthdistrict.org">www.northcentralhealthdistrict.org</a>	
Jasper Memorial Hospital 898 College St, Monticello, GA 31064 Phone: (706) 468-8826 <a href="http://www.jaspermemorialhospital.org">www.jaspermemorialhospital.org</a>	
988 Suicide and Crisis Lifeline Phone: 988 <a href="http://www.988lifeline.org">www.988lifeline.org</a>	

## **Data Sources**

*American Cancer Society*  
[www.cancer.org](http://www.cancer.org)

*Centers for Disease Control CDC*  
[www.cdc.gov](http://www.cdc.gov)

*County Health Rankings and Roadmaps, University of Wisconsin Population Health Institute*  
[www.countyhealthrankings.org](http://www.countyhealthrankings.org)

*Georgia Department of Public Health*  
<https://dph.georgia.gov/>

*Georgia Rural Health Association*  
<http://www.grhainfo.org/>

*Healthy People 2030, US Department of Health and Human Services*  
[www.healthypeople.gov](http://www.healthypeople.gov)

*OASIS – Online Analytical Statistical Information System*  
*Georgia Department of Public Health*  
[www.oasis.state.ga.us/](http://www.oasis.state.ga.us/)

*US Census Bureau*  
*American Fact Finders/American Community Survey 5-Year Estimates*  
[www.census.gov](http://www.census.gov)